

Tear away label for private branding

Taped neck and shoulders for comfort and durability



Double needle stitch at sleeve and bottom hem

## Everyday Cotton Youth Tee

### ATC1000Y

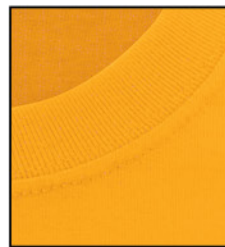
#### Product Features:

- 9.1-oz, 100% cotton
- Compacted yarns to minimize shrinkage
- **OEKO-TEX® STANDARD 100**

Youth Sizes: XS(2-4), S(6-8), M(10-12), L(14-16), XL(18-20)



1 x 1 rib knit collar



### Available Colours and PMS Colours

Textile fabric colours are subject to dye lot variation and will not be exact match to print pantone reference



# ATC1000Y - Everyday Cotton Youth Tee



\*90/10 cotton/polyester \*\*50/50 cotton/polyester \*\*\*98/2 cotton/polyester

Due to the nature of 50/50 cotton/polyester neon fabrics, special care must be taken throughout the decoration process.

## Garment Measurements

Size	XS	S	M	L	XL
<b>Chest - Half Measure</b>	14"	16"	17"	18"	19"
<b>Chest - Full Measure</b>	28"	32"	34"	36"	38"
<b>Body Length from HPS</b>	19"	21"	23"	25"	27"
<b>Sleeves Length - CB</b>	11 3/4"	13 3/4"	14 3/4"	15 3/4"	16 3/4"

Finished measurements in inches. Refer to "How to Measure" guide for detailed information on measurements instructions.

## Youth General Sizing Guide

Size	XS	S	M	L	XL
<b>Numeric Size</b>	2-4	6-8	10-12	14-16	18-20
<b>Chest</b>	14"-26"	26"-28"	28"-30"	30"-32"	32"-35"
<b>Waist</b>	22 1/2"-23 1/2"	23"-24 1/2"	24 1/2"-25 1/2"	25 1/2"-27"	27"-29"
<b>Sleeves Length - CB</b>	24"-25"	25"-26"	26"-27 1/2"	27 1/2"-29"	29 1/2"-31"

Tear away label for private branding

Taped neck and shoulders for comfort and durability



Double needle stitch at sleeve and bottom hem

## Everyday Cotton Tee

### ATC1000

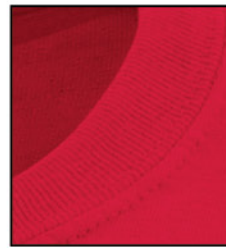
#### Product Features:

- 9.1-oz, 100% cotton
- Compacted yarns to minimize shrinkage
- **OEKO-TEX® STANDARD 100**

Adult sizes: S-6XL



1 x 1 rib knit collar



### Available Colours and PMS Colours

Textile fabric colours are subject to dye lot variation and will not be exact match to print pantone reference



# ATC1000 - Everyday Cotton Tee



\*90/10 cotton/polyester \*\*50/50 cotton/polyester \*\*\*98/2 cotton/polyester

Due to the nature of 50/50 cotton/polyester neon fabrics, special care must be taken throughout the decoration process.

## Garment Measurements

Size	S	M	L	XL	2XL	3XL	4XL	5XL	6XL
<b>Chest - Half Measure</b>	18 1/4"	20 1/4"	22"	24"	26"	27 3/4"	29 3/4"	32"	34"
<b>Chest - Full Measure</b>	36 1/2"	40 1/2"	44"	48"	52"	55 1/2"	59 1/2"	64"	68"
<b>Body Length from HPS</b>	26 5/8"	28"	29 3/8"	30 3/4"	31 5/8"	32 1/2"	33 1/2"	35"	36"
<b>Sleeves Length - CB</b>	16 1/4"	17 3/4"	19"	20 1/2"	21 3/4"	23 1/4"	24 5/8"	23 3/4"	24 3/4"

Finished measurements in inches. Refer to "How to Measure" guide for detailed information on measurements instructions.

## Adult General Sizing Guide

Size	S	M	L	XL	2XL	3XL	4XL	5XL	6XL
<b>Chest</b>	34"-36"	38"-40"	42"-44"	46"-48"	50"-52"	54"-55"	56"-57"	58"-61"	61"-64"
<b>Waist</b>	29"-32"	32"-35"	35"-38"	38"-41"	41"-44"	44"-47"	47"-50"	50"-53"	53"-56"
<b>Sleeves Length - CB</b>	32"-33 1/2"	34"-35"	35"-36"	36"-37"	37"-38"	38"-39"	38 1/2"-39"	39-39 1/2"	39 1/2"-40"